



Find out more about the University of Essex

Find out more about the University of Essex with our video gallery. You will find more videos on our [Youtube](#) and [Vimeo](#) channels. Visit our website to see our video gallery and virtual tours:

<http://www.essex.ac.uk/vr/>

Find out more about Colchester

Colchester is a thriving town with a rich history. Visit Colchester online at: <http://www.visitcolchester.com/>

Find out more about our events for the business community. Please follow us on twitter@Essex.Partners.

Second EGH Workshop on Optimisation and Applied Mathematics 2013

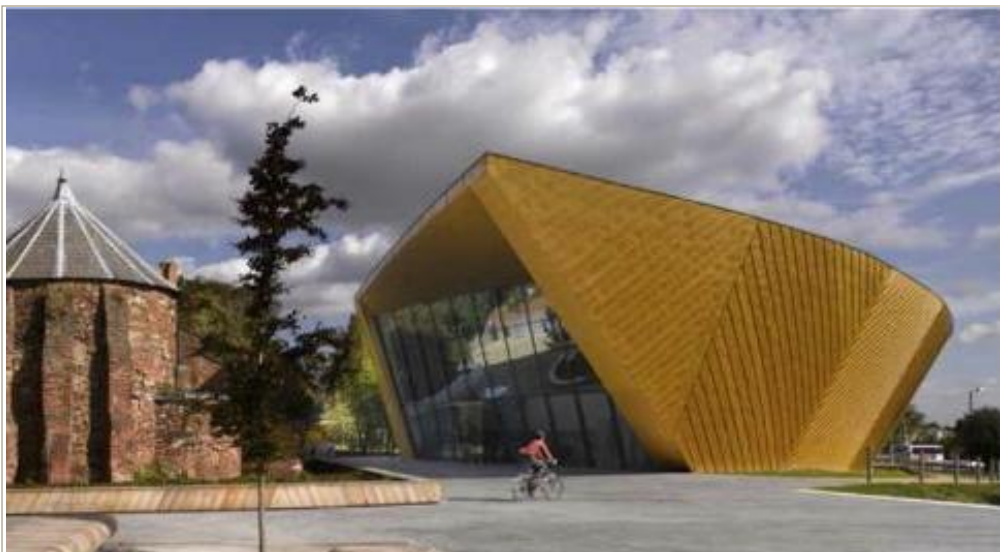
Department of Mathematical Sciences

The aim of this 2nd Edition of the Essex-Greenwich-Hertfordshire Mathematics workshop is to bring together optimisation experts, applied mathematicians and research students to report on their work and discuss new developments.

This two day Workshop will take place at firstsite, a new conference centre in the town centre of Colchester on the 6 and 7 of June, 2013.

One aspect which will be discussed is the emergence of heuristics as powerful competitors to analytic methods, particularly in optimisation. A question that will be addressed is: Are we witnessing a shift in approach particularly when it comes to optimisation favouring less analytic methods?





Workshop programme

The programme consists of one and a half days of presentations by invited speakers and other participants including PhD students. A two hour session in the afternoon of the second day is reserved for a panel discussion of the question raised earlier. It will cover the general trend of research and future directions of investigation in optimisation and applied mathematics particularly at the three institutions.

Poster space will be provided for those who have not been allocated presentation time slots. There will be ample opportunity for networking during the two days.

Registration and fees

There will be a nominal registration fee of £35 for students, £50 for academics and £150 for business representatives.

Lunch and refreshments will be provided.

Please note that participants will have to arrange their own accommodation. A list of local hotels and B&Bs will be provided on request.

Speakers

Key speakers include:

- Professor Arie Iserles, DAMTP, University of Cambridge, UK
- Professor El Ghazali Talbi, University of Lille-INRIA-CNRS, France
- Professor Peter Jimack, University of Leeds, UK
- Professor Eric Fraga, UCL, UK
- Professor Said Salhi, University of Kent, UK
- Dr Djamila Ouelhadj, University of Portsmouth, UK

Contact us

To reserve your place or to find out more about the workshop please e-mail maths@essex.ac.uk.



You can also find us on Facebook:
www.facebook.com/UoEmaths
and Twitter:
<https://twitter.com/EssexMaths>